

Que Pasa Grecia
Serving the Expat Community since 2014

View this email in [your browser](#)

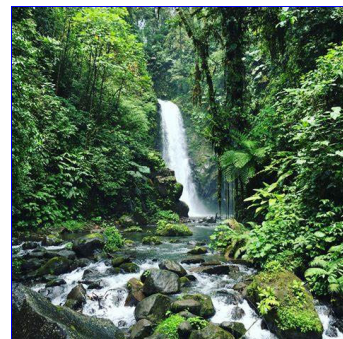
¿Qué Pasa?



Que Pasa Grecia Update #10 October 2025

What's New in Que Pasa Grecia

Since our last update, there's not much new, but we do have a listing for a **chair for sale** and there are new recommendations for things such as **furniture makers and cell phone sellers**. Be aware that the area "New Friends" (aka **Newcomers**) group meets for lunch every Wednesday at El Jardin restaurant in Grecia. **Katya De Luisa** is lecturing locally on recognizing and coping with **dementia** and will be speaking at an upcoming Newcomers lunch (click on the image of her book in the side panel of this Update for more info). For details on all, go to QuePasaGrecia.com.



The “**ALERTS**” tab at the top of the Que Pasa Grecia homepage has had a few items added. Don’t forget to check it for the latest alerts.

Miscellaneous Commuting News

New Grecia-Ruta 1 Interchange – In November, construction of a new interchange is scheduled to begin at the junction of Ruta 1 and Ruta 154 (connecting Grecia with the Pan American highway). This intersection will get an overpass interchange. When complete, it should speed “on and off access” and increase the safety of entry and exit from Ruta 1. However, until completed, expect detours and significant delays.

Your editor cannot say how this interchange will benefit the commute in either direction from Ruta 1 to downtown Grecia on Ruta 154. Without the interchange construction, it now can take upwards of 30 to 50 minutes to make this commute depending on traffic and obstructions. The new interchange is unlikely to speed this trip.

East-West Pan American Highway Closed – A complete hillside collapse took out an entire section of Ruta 1 (Pan Am Highway) at what is known as the Devil’s Lap west of San Ramon (aka Cambronero) near the previous Ruta 1 landslide one that took a busload of passengers to the bottom of the ravine 2 years ago. Ruta 1 will be diverted to the same detour built to accommodate the previous Ruta 1 landslide. The damage will require significant repairs and the detour is likely to last even longer than the previous one. Heavy-freight semis will not be allowed on the detour and you can expect increased truck traffic on the alternate route, the Ruta 27 toll road.

Ruta 1 Toll Booths Closed – To expedite severely slowed traffic, two toll booths have been closed on Ruta 1 for the foreseeable future westbound 2 kms before the Juan Santamaria Aeropuerto and in Naranjo eastbound 1 km northwest before the downgrade headed toward San Jose. Having traveled on Ruta 1 at both locations, your editor can attest that it seems to have helped traffic flow and commute times.

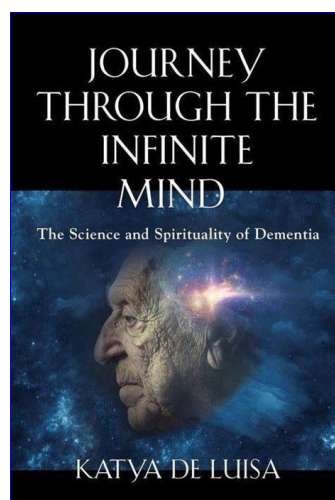
The Back Road to Atenas – while we announced last month that the road has now reopened, please be aware of some significant erosion and subsidence on the road from Grecia before you pass under the Ruta 1 bridge. Be careful. It’s a pretty narrow and somewhat unsafe passage.

Caution on Ruta 32 - If you are heading to the Caribbean Coast on Ruta 32, expect possible delays on the steep section just east of the

Que Pasa offers articles on local places to go, helpful how-to’s, and general observations of life in the Grecia/Sarchi area.
Click on the photo to visit our site!



New Friends Lunch,
Wednesdays at noon, Los
Jardines Restaurant, near the
courthouse in Grecia.



Excellent study on the topic of dementia. Katya will be speaking on this soon at New Friends lunch in Grecia. Click on image to see her listing and info on QPG.



tunnel due to frequent landslides, fallen trees, and clean up plus repairs due to them. Also, on the flatter sections on what will eventually be fully divided four-lane highway, there are abrupt lane endings and transitions of traffic flow to the opposite side of the divided sections due to continuing construction. Pre-warnings and directional signage are almost non-existent. It is possible to suddenly, unknowingly be going the wrong way. Be very careful and stay alert as construction continues. Using Waze will help you to be aware of some of these hazards. Sunday morning travel on 32 is recommended as there is less commercial truck travel on Sundays, which can greatly reduce your time spent commuting.

Other Miscellaneous News

President Chaves – President Rodrigo Chaves' immunity from prosecution remains intact as a vote in the Chamber of Deputies failed to remove it.

Increased Port Surveillance – Thanks to gifts of AI-based scanning equipment from the U.S. government, all Costa Rica ports will be able to scan every container entering or leaving every port for suspect cargo such as drug shipments, weapons, and other contraband.

New Pequeno Mundo – While we're still pretty certain that the land in Grecia for a new PriceSmart has been purchased, we are less certain that it will be complemented by a Grecia Pequeno Mundo as a new P.Q. is already under construction in Palmares.

Grecia Crime Uptick – There has been an increase in break-ins and car thefts in various communities of Grecia. Lock your homes and cars and be on the lookout for suspicious activity.

"Do Not Travel" Alerts – A number of countries have added "Do Not Travel" designations to Costa Rica due to the huge increase over the past two years in homicides and violent crime. This is apt to decrease travel to C.R. and further impact an already suffering tourism industry.

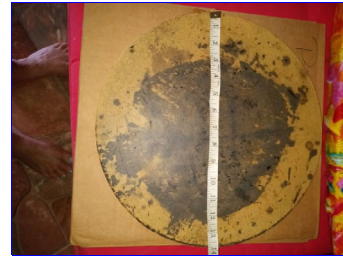
Rainfall to Date – So far, this past month added significantly to our annual rainfall totals, but we have still produced less rainfall than the record year of 2024. Here's the September and YTD rainfall for El Cajon de Grecia and San Juan de Sarchi. Thanks to Irina and Tom.

El Cajon de Grecia (Irina)

September: 51.3 cms; 20.9 ins.

YTD: 274.1 cms; 107.9 ins.

Beautiful, sturdy, functional,
For Sale!



Pizza Stone - \$30!



ALERTS Section, link located in the main menu at the top of every page in *QuePasaGrecia*.



You can't get there from here. Highway collapse in Cambronero (on the road to Puntarenas). Detour for foreseeable future.



Construction on new Route 1/ Grecia interchange to start November 1.

San Juan de Sarchi (Tom)

September: 45.0 cms; 17.7 ins.

YTD: 213.1 cms; 83.9 ins.

Note to Readers: The following section, U.S. Government Changes Impacting Expats, is accurate at the time of writing, but may contain information, conclusions, and/or suggestions with which some readers may disagree, cause discomfort, or find objectionable. For those individuals, we recommend that you finish your Que Pasa Grecia update reading here and skip to the Costa Rican saying. For the rest of our readers, we hope you find value in reading the section below.

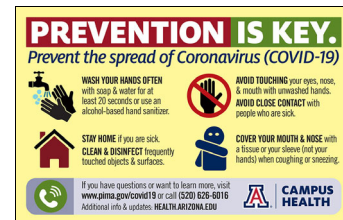
U.S. Government Changes Impacting Expats

Federal Government Shutdown – Without an extension of the debt ceiling cap, the federal government shut down at midnight September 31. Depending on how long the U.S. government is unfunded, the impact on expats will be varied and probably become more noticeable the more prolonged a shutdown we have. Social Security benefits will still be paid, but the U.S. Embassy response to assistance and communication for SSA issues and passports will be cutback and you should expect delays. Call the U.S. Embassy U.S. Citizen Services (2519-2000) for information and assistance.

When travelling to and from the U.S. during the shutdown, remember air traffic controllers and TSA employees are being required to work unpaid. During previous shutdowns employees increasingly called in “sick” and flight boarding and flight delays were experienced due to longer security wait times in. (Your editor could find no statistics on increased flight safety issues related to shortages of unpaid air-traffic controllers.)

Economically during shutdowns, U.S. citizens are less likely to travel internationally and airlines can be expected to cut back on flights. (We're uncertain if cruises will also be cancelled.) This means reduced income for Costa Rica's tourism industry and businesses that serve it in an economic segment that is already depressed. The U.S. government shutdown will have a negative economic impact on the Costa Rica economy.

More Travel – ICE will be monitoring and photographing or scanning all travelers outbound from the U.S. If you do not readily identify as Caucasian, or you are traveling to a Latin American country, such as Costa Rica, you may be stopped or contacted at a later date.



Our newest import - the latest variant of COVID. There has also been an uptick of upper respiratory infections.

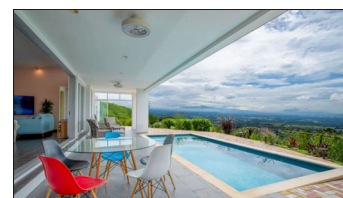


Caribe Sinfónico asks for your support!



Treat yourself to a spa date,
you will thank yourself!
Heavenly!

**NOW AVAILABLE - Gift
Certificates! What better way
to treat a Friend than with a
90-minute facial!**



Great houses in Atenas at
every price point!



Immigration – The U.S. has continued to threaten to deport Kilmar Abrego Garcia to an African nation. A federal judge has temporarily barred this action, but little is known about an ultimate outcome, but such behavior does not bode well for U.S. immigrants, both illegal and legal. Will we see more immigrants headed to Costa Rica?

Tariffs, Retirement Savings, and the Cost of Living – A U.S. appeals court has ruled that many of the U.S. president's tariffs are illegal. The court is letting them stand temporarily until the Supreme Court weighs in. It is unclear what SCOTUS will ultimately determine or how the tariffs remaining in place for a bit longer will impact the Costa Rica economy. Continue to stay tuned.

In September, the prime rate was lowered ¼%. It means for you that interest rates credit cards may come down very slightly, but it will generally have minimal to no impact on expats in Costa Rica.

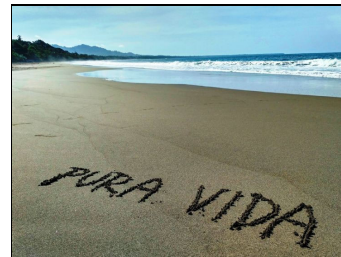
Reminder: Costa Rica has instructed Correos to temporarily suspend all shipments to the U.S. until the newly implemented tariffs can be renegotiated. Until the situation is resolved, we will be unable to send packages of any size, content, or value to the U.S. through Correos Costa Rica. Note: while there has been no clarification, your editor has checked sources and is reasonable certain the postal prohibition does not effect incoming mail from the U.S.

Social Security – See mentions above.

Drug Interdiction or an Armed Conflict Nearby? – U.S. warships have begun bombing suspected drug cartel boats off of the Venezuelan coast without provocation or any legal cause and the U.S. regime is making vague threats regarding Maduro and his government. The U.S. Army is conducting joint maneuvers with the Panamanian military near the Venezuelan border. Let's watch this situation and be alert to any escalation. If further escalation occurs, it is likely to have an impact in some way on Costa Rica.

ONGOING PROBLEM

Your bank will NEVER call asking for your private information. Neither will Social Security or the IRS. **Don't get duped!** Better to hang up and call your bank than to get your accounts cleaned out.



"Matar moscas a cañonazos."

Literal translation: Using a sledgehammer to kill a fly.

English equivalent: *Don't overreact but react in a measured and appropriate manner.*

Thank you Isabel Arguello for your continuing contributions.

Be happy and grateful living in this beautiful country,
D. Davis, editor
Diane Cooner, webmaster

Contact us at: editorqpg@gmail.com

[unsubscribe from this list](#)

[update subscription preferences](#)

[why did I get this?](#) [unsubscribe from this list](#) [update subscription preferences](#)

Que Pasa Grecia · Grecia/Sarchi · Grecia/Sarchi 11501 · Costa Rica

